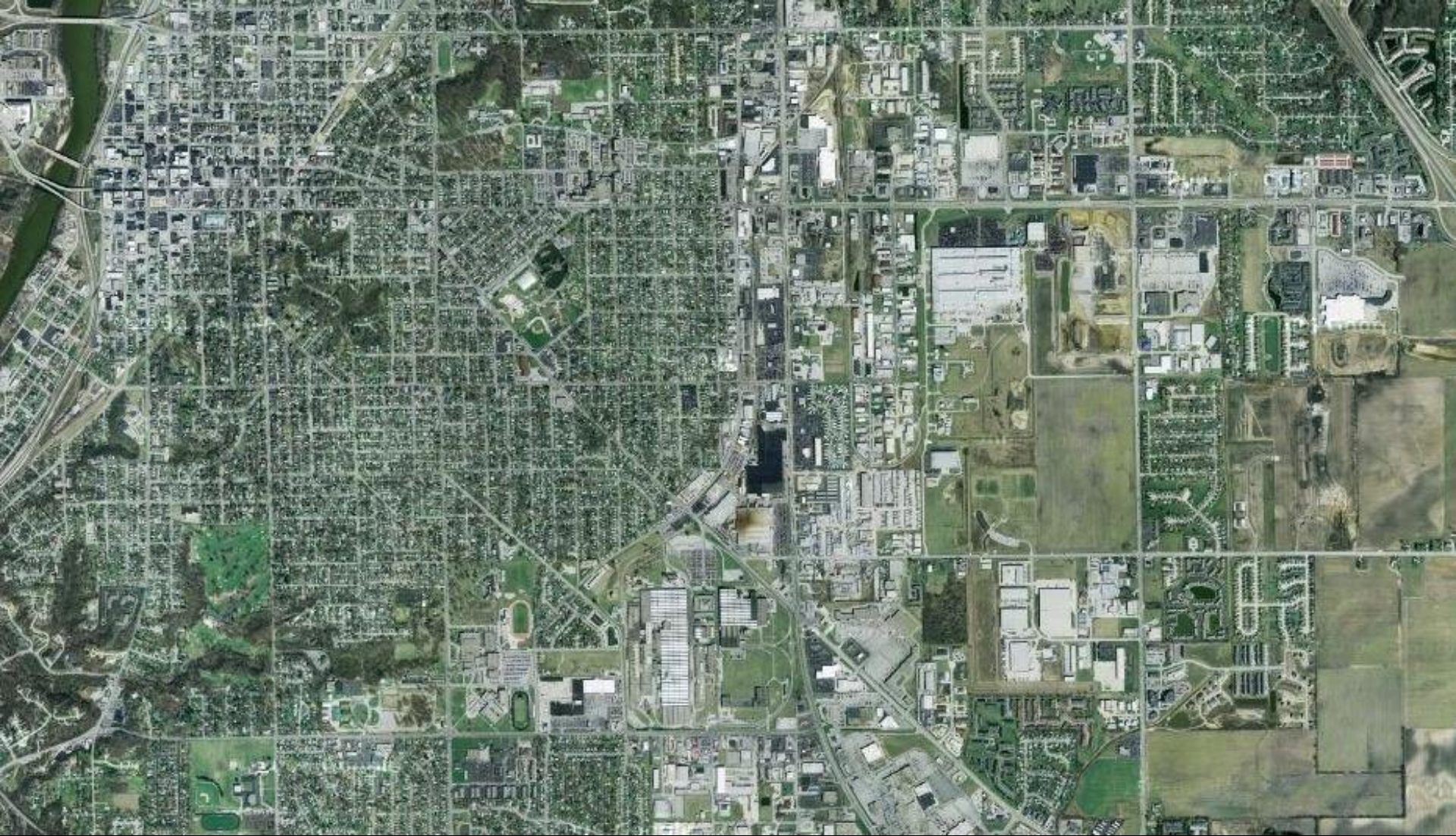
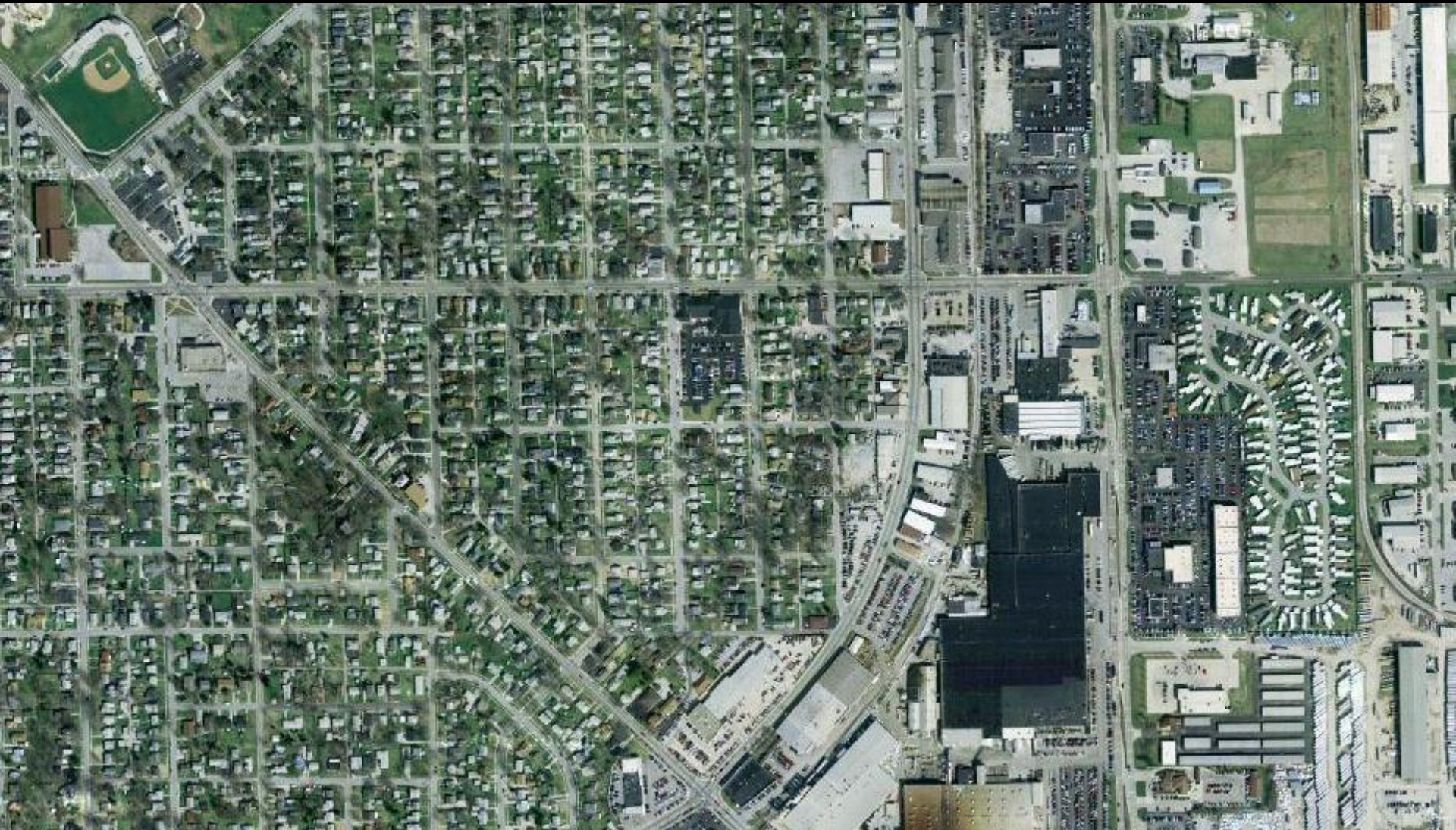


To the Saints at Kossuth Street . . .

Be the Church!

Ephesians 1:1-14







From a **distant** perspective,
KSBC should be recognized as people who . . .

- Worship** 1: 3, 6, 14
God is genuinely praiseworthy.
- Pray** 1:15-23 (17-18)
Continuous thanking, asking and seeking of God.
- Remember** 2:1-22 (11)
God's grace and love define our new life.
- Preach** 3:1-21 (7-9)
Proclaim the unsearchable riches of Christ.

From a **closer** perspective,
KSBC should appear . . .

1:1-14

God focused.

Christ magnifying.

Spirit led.

Distinctive people.

From a **real close** perspective,
KSBC is energized by God's transforming love . . .

Praise be to God! 1:3-14

Chosen before the foundations of the world	4
Set apart to adoption as sons	5
Redeemed through Christ's death	7-8
Made aware of God's plan for all things in Christ	9
Guaranteed an inheritance by the Spirit	11-14

Lord, I am listening . . .

Repent of your small, man centered thinking about who we are and what we do as a church.

Seek God for a renewed appreciation of his blessings in your life in Christ Jesus.